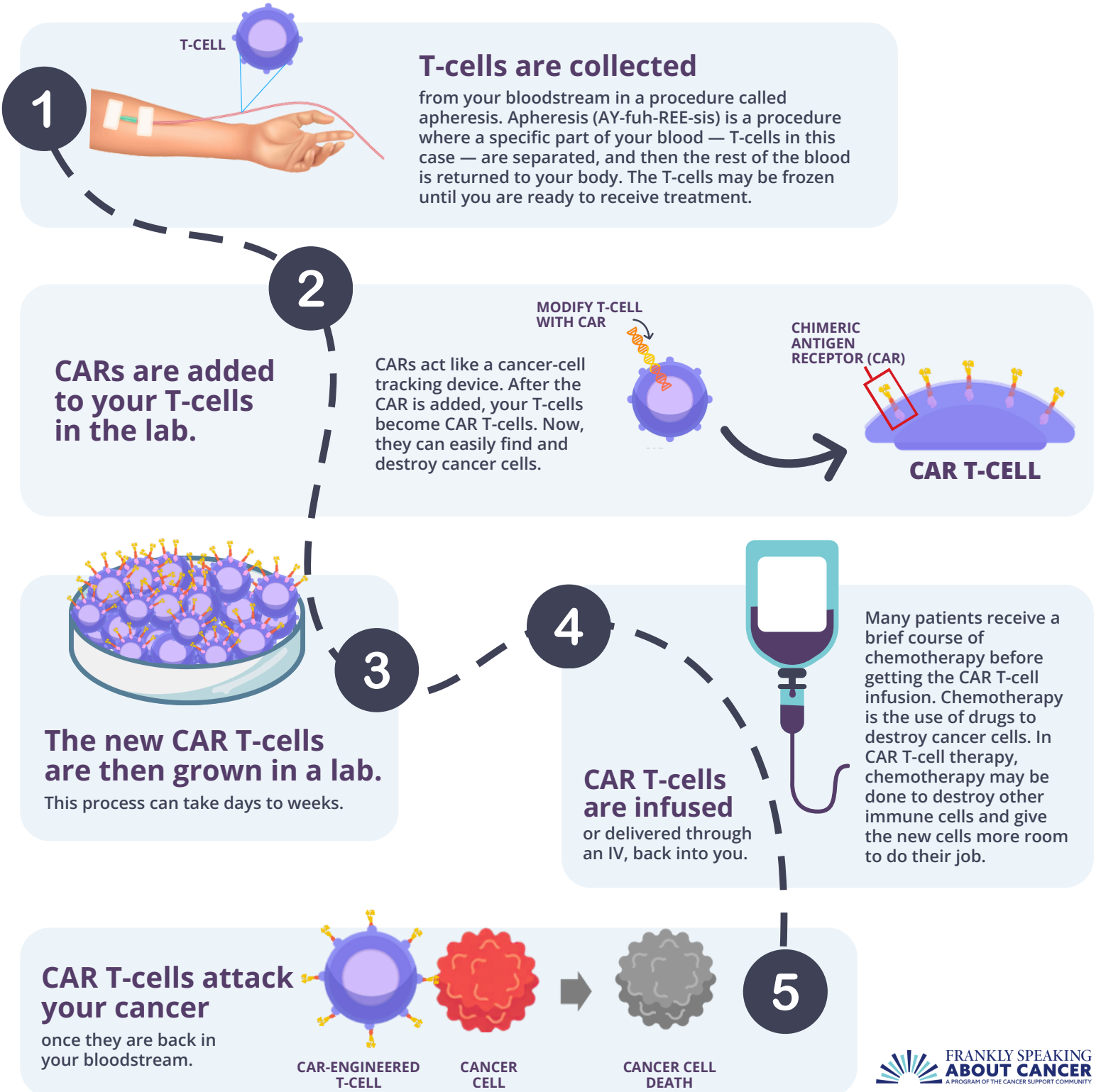


# What is CAR T-cell Therapy?

CAR T-cell therapy, or chimeric antigen receptor (CAR) T-cell therapy, is a type of cancer treatment that uses your body's natural defenses to fight cancer. It is called CAR T-cell therapy because a lab-made protein, called CAR, is added to your own T-cells. This CAR protein helps the T-cells find, recognize, and kill cancer cells more easily.



Each patient's CAR T-cell infusion process is personalized, using their own T-cells. CAR T-cell therapy is designed to be a one-time treatment. CAR T-cells can remain in the body and continue to be active for a long period of time. Some patients who have responded to CAR T-cell therapy remain in remission after several years.

### Interested in CAR T-cell therapy?

If you are a patient or caregiver interested in learning more about CAR T-cell therapy, talk to your doctor. CAR T-cell therapy is available in over 150 cancer centers. If you do not live near one of these centers, you should ask whether there is a patient assistance program available to pay for travel costs.

To learn more about CAR T-cell Therapy, visit  
[www.CancerSupportCommunity.org/CAR-T-cell-Therapy](http://www.CancerSupportCommunity.org/CAR-T-cell-Therapy).



#### CANCER SUPPORT COMMUNITY CAR T-CELL THERAPY CONCIERGE PROGRAM

Our CAR T navigators are licensed clinical social workers who are oncology-trained to provide education, resources, and emotional support. They provide these services **over the phone** and **for free** to people with cancer who are considering or are actively being treated with CAR T-cell therapy. The CAR T navigator can act as a liaison between your local treatment center and the CAR T treatment center, guiding you and your caregiver through the process. The CAR T navigator is available to follow your therapy process for up to one year after the infusion. This program provides free personalized navigation for both patients and caregivers.

**If you have any questions or need additional support during the CAR T-cell therapy process, call Cancer Support Community's CAR T Helpline at 844-792-6517.**

This publication is available to download and print yourself at  
[www.CancerSupportCommunity.org/CAR-T-cell-Therapy](http://www.CancerSupportCommunity.org/CAR-T-cell-Therapy).

For print copies of this publication or other information about coping with cancer, visit  
[Orders.CancerSupportCommunity.org](http://Orders.CancerSupportCommunity.org).

Frankly Speaking About Cancer: CAR T-cell  
Therapy Program Partner:



This updated publication was made  
possible through generous support from:

Kite & BMS

The Cancer Support Community and its partners provide this information as a service. This publication is not intended to take the place of medical care or the advice of your doctor. We strongly suggest consulting your doctor or other healthcare professionals to answer questions and learn more.

BROUGHT TO YOU BY:

